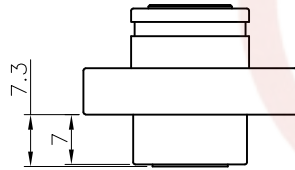
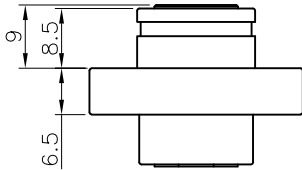
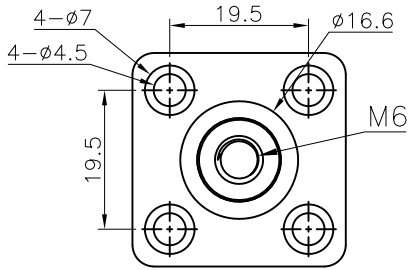
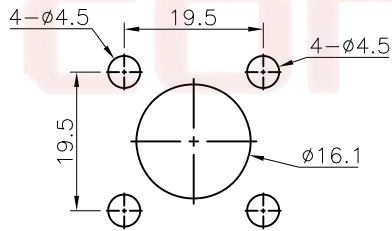
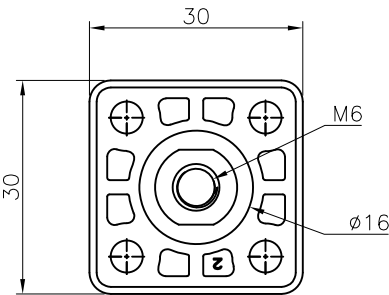


The information provided herein is from CONNELY Electronic Co., Ltd. and is confidential. Any disclosure to a party other than the recipient is prohibited. The intellectual properties and its rights contained herein, including but not limited to, trademarks, patents, copyrights, trade secrets, and technical know-how, are owned exclusively by CONNELY or its affiliates. Unauthorized use of this information in any format or manner. CONNELY may enforce its intellectual property rights at its own discretion; failures or delays to exercise such rights does not constitute a waiver of such rights.

REV.	DESCRIPTION	DRAWN	CHECKED	APPROVED
A	NEW RELEASE	WPY 03/13/26'		



With sheath cover



Recommend Panel Hole

With waterproof gasket

NOTES:

Rated voltage:600V  
 Rated current:120A.  
 Contact Barrel Wire Size:6AWG~4AWG  
 Temp. Range:-40° C~+125° C.

Materials:

Contact: Brass, Nickel plated.

Insulator: PA66.

Product Number Code:

DS1208-02 - X X X X X

Screw type:

W:W/Screw

X:W/O Screw

Contact plating:

N:Nickel

Housing color:

B:Black

R:Red

Connector type:

F:Female

Rated current:

120:120A



(Series Image-Reference Only)



M6 screws

GENERAL TOLERANCE		ANGLE TOLERANCE	
X.	±0.60	X.	±5°
.X	±0.38	.X	±3°
.XX	±0.25	.XX	±2°

PROJECTION	TITLE	120A DOUBLE TERMINAL	
	mm	SHEET SIZE	A4
UNITS	mm	SERIES	DS1208-02 SERIES

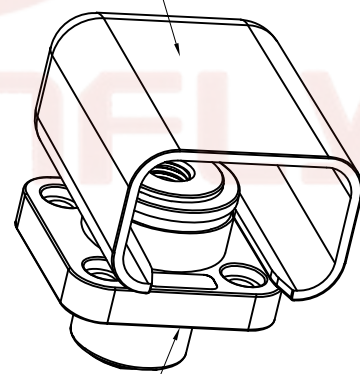
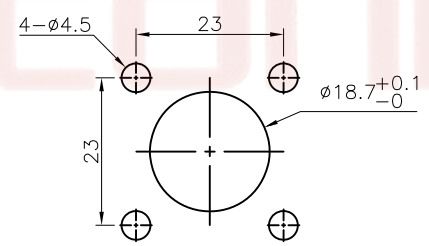
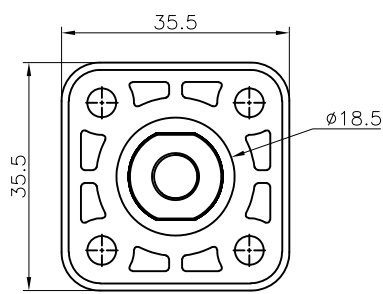
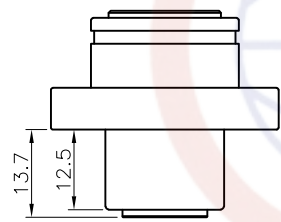
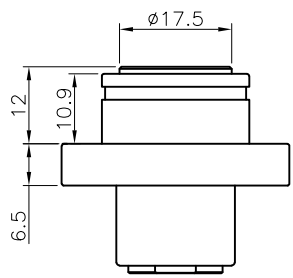
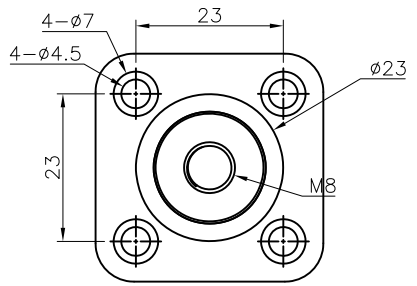
DRAWING TYPE	CUSTOMER		
SCALE	1:1	SHEET	1 OF 2
DRAWING NO.	C-DS1208-02-XXXXX-A		

**晨翔电子有限公司**  
**CONNELY CONNELY ELECTRONIC CO. LTD**

The information provided herein is from CONNELY Electronic Co., Ltd. and is confidential. Any disclosure to a party other than the recipient is prohibited. The intellectual properties and its rights contained herein, including but not limited to, trademarks, patents, copyrights, trade secrets, and technical know-how, are owned exclusively by CONNELY or its affiliates. Unauthorized use of this information in any format or manner. CONNELY may enforce its intellectual property rights at its own discretion; failures or delays to exercise such rights does not constitute a waiver of such rights.

Dept	1	2	3	4	5	6	7	8
Qty								
DC	1							
ED	1							
IE	1							
ISO	1							
PD	1							
R&D	1							
SD	1							
QA	1							
QC	1							
QE	1							

REV.	DESCRIPTION	DRAWN	CHECKED	APPROVED
A	NEW RELEASE	WPY 03/13/26'		



NOTES:  
 Rated voltage:600V  
 Rated current:200A.  
 Contact Barrel Wire Size:6AWG~1/0AWG  
 Temp. Range:-40° C~+125° C.  
 Materials:  
 Contact: Brass,Nickel plated.  
 Insulator: PA66.  
 Product Number Code:  
 DS1208-02 - X X X X X

Screw type:  
 W:W/Screw  
 X:W/O Screw  
 Contact plating:  
 N:Nickel  
 Housing color:  
 B:Black  
 R:Red  
 Connector type:  
 F:Female  
 Rated current:  
 200:200A

GENERAL TOLERANCE		ANGLE TOLERANCE	
X.	±0.60	X.	±5°
.X	±0.38	.X	±3°
.XX	±0.25	.XX	±2°
DRAWING TYPE		CUSTOMER	
SCALE		1:1	SHEET 2 OF 2
DRAWING NO.		C-DS1208-02-XXXXX-A	

PROJECTION		TITLE	200A DOUBLE TERMINAL
UNITS	mm	SHEET	DS1208-02 SERIES
SHEET SIZE	A4	SERIES	DS1208-02 SERIES

晨翔电子有限公司  
**CONNELY CONNELY ELECTRONIC CO. LTD**